



Made in USA

N

忍者

NinjaPaintball

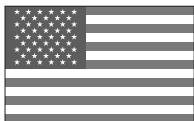
Watch the video at: www.ninjapaintball.com

NINJA REGULATOR SYSTEM OWNER'S MANUAL

**CONGRATULATIONS, YOU HAVE MADE AN
EXCELLENT CHOICE BY PURCHASING THE
NINJA REGULATOR.**

**THE BEST REGULATOR IN PAINTBALL!
PROUDLY MADE IN THE USA.**

**1.877.NINJAUSA
(1.877.646.5287)**

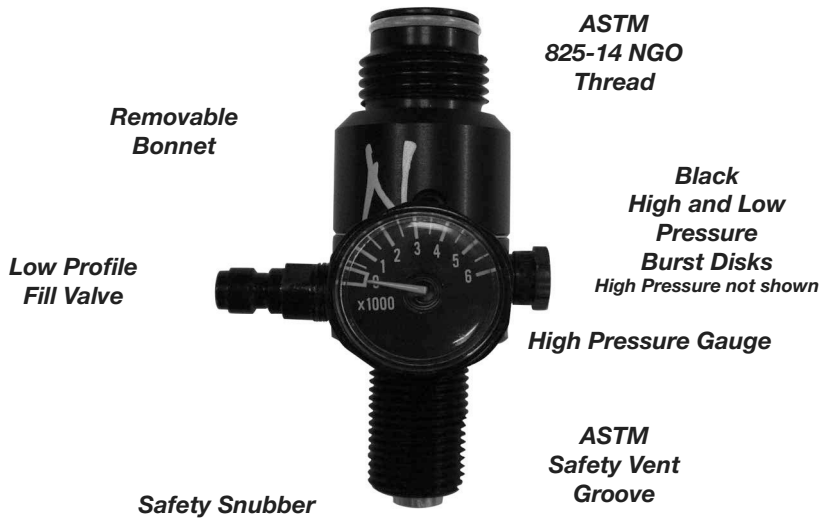


MADE IN USA

ASTM compliant, NINJA Regulators can toggle from STANDARD 800-900 PSI to a medium 650 PSI or low 450-550 PSI output in a few minutes, eliminating the need to purchase 2 regulators or separate spring kits, see page 5.



PATENT NUMBERS 6,851,447 / 7,059,343 / 7,051,751



THE SAFETY SYSTEM

The NINJA Regulator is equipped with an ASTM APPROVED bottle Burst Disk required by the Department Of Transportation. (D.O.T.)

In addition to the required safety burst disk, the regulator has a Low Pressure (LP) safety burst disk (stamped 1.8K).

The 1.8K PSI safety burst disk is there to protect you and your marker in the unlikely event that the NINJA Regulator fails.



REMEMBER, most regulator failures are the result of contaminated air.

If the (LP) 1.8K PSI safety burst disk vents, it did so for a reason. We recommend you do the following:

Disassemble the regulator (refer to Service and Rebuild procedures), inspect the regulator for contamination and clean if necessary.

Install a new 1.8K PSI burst disc, available at NINJAPAINBALL.COM and refill the system.

If the (LP) 1.8K PSI burst disc vents after rebuild see an airsmith for help or call:
1.877.NINJAUSA • (1.877.646.5287)

NINJA REGULATORS have a Safety Vent Groove and Safety Snubber on the stem (As shown in the illustration on page 2). These lifesaving features allow for the venting of the bottle, in the event that the regulator is unscrewed from the bottle with pressure present in the bottle.

ALWAYS CHECK TO MAKE SURE THERE IS NO GAP BETWEEN THE BOTTLE AND REGULATOR SEAL. SEE ILLUSTRATION BELOW. IF THERE IS A GAP



STOP!!! DO NOT FILL OR USE YOUR SYSTEM. Place the system on the ground

and wait for the system to FULLY DEGAS! Contact a qualified airsmith IMMEDIATELY!

OR CALL 1.877.NINJAUSA • (1.877.646.5287) for assistance.



FILLING THE NINJA REGULATOR SYSTEM

The NINJA Regulator system is equipped with the industry standard “QD Style” fill fitting, which allows your NINJA Regulator system to be refilled either on or off the marker. The NINJA Regulator system may be filled with either *Clean, Dry* Compressed Air or nitrogen.



UNDER NO CIRCUMSTANCES SHOULD THE NINJA REGULATOR SYSTEM BE REFILLED WITH PURE OXYGEN.

When filling your NINJA Regulator system do not exceed the pressure rating shown on NINJA REGULATOR CYLINDER'S LABEL



DO NOT APPLY OR INJECT OIL OF ANY TYPE TO THE FILL OR BURST DISC PORTS. OIL WILL VAPORIZE AND POSSIBLY IGNITE DURING THE FILL PROCEDURE.

It is important to keep dirt, oil and water out of your NINJA Regulator system. Most regulator failures are due to dirt or contamination. Always keep a cover on the fill nipple when you are not filling the NINJA Regulator system. If you use compressed air, make sure that the compressor providing that air is equipped with *WORKING* filters and moisture separators.

CONNECTING YOUR NINJA REGULATOR

SLOWLY Screw your NINJA Regulator system into your markers ASA fitting. It is recommended that you apply Ninja Lube on the NINJA Regulator bonnet threads. This simple procedure will reduce bonnet and ASA thread wear. The NINJA Regulator has a “pin valve” output valve which shuts off the gas delivery when the power system is removed from the marker.

PRESSURE CONVERSION

Unless ordered otherwise, all NINJA Regulators are factory shipped at a standard 800-900 PSI output pressure. If you wish to adjust the output pressure please follow these six simple steps. **WATCH THE VIDEO AT WWW.NINJAPAINBALL.COM**



BEFORE PROCEEDING, MAKE SURE YOUR SYSTEM HAS BEEN COMPLETELY DEGASSED VIA THE OUTPUT PIN VALVE, TO INSURE THAT NO TRAPPED COMPRESSED GAS IS PRESENT!



ALWAYS WEAR EYE PROTECTION, GLOVES AND POINT THE AIR SYSTEM IN A SAFE DIRECTION PRIOR TO DEGASSING THE SYSTEM!!!

1. Remove the two 10-32 set screws that lock the Bonnet (the top portion of the regulator) to the Reg Body.
2. Unscrew the Bonnet counter clockwise from the Reg Body. (It has normal right-hand threads.) Bonnet should remove easily. Make sure there is no trapped air in the bonnet by depressing the pin valve.

Helpful Hint: A 10-32 bonnet removal tool (2" long screw) was included with you airtystem, simply screw the tool into one of the bonnet set screw holes to ease the removal and reinstallation of the bonnet.

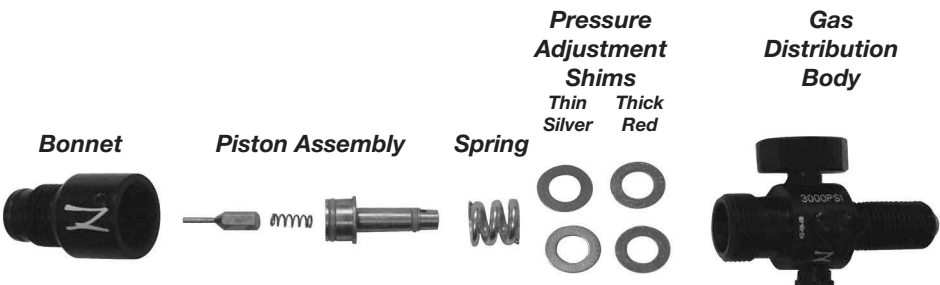
Be careful not to lose the brass Output Pin Valve or its spring.

3. PRESSURE ADJUSTMENT:

The shims are located in the bottom "pocket" of the gas distribution body. Due to the NINJA Regulator being hand crafted and tested the number of silver shims may vary.

- Remove 1 red shim approximate output 650 PSI
- Remove 2 red shims approximate output 500 PSI

4. Reinstall the remaining shims first into the bottom pocket of the gas distribution body, then install the main spring into the gas distribution body on top of the shims.
5. Carefully screw the Bonnet back onto the Reg Body. Make sure the bonnet is installed fully. The bonnet should be contacting the top of the gas distribution body there should be no gap. The 2" bonnet assembly tool will help with the install. Do not apply excessive torque screwing the Bonnet to the Gas Distribution body.
6. Replace the two locking set screws and tighten securely. **DO NOT OVER TIGHTEN.**



SERVICE & REBUILD PROCEDURES

WATCH THE VIDEO AT WWW.NINJAPAINBALL.COM

For reference purposes, consult the exploded parts diagram.



ALWAYS WEAR EYE PROTECTION, GLOVES AND POINT THE AIR SYSTEM IN A SAFE DIRECTION PRIOR TO DEGASSING THE SYSTEM!!!

SPARE PARTS & REBUILD KITS AVAILABLE AT NINJAPAINBALL.COM

PRIOR TO DISASSEMBLY FULLY DEGAS THE AIR SYSTEM BY DEPRESSING THE PIN VALVE UNTIL NO AIR REMAINS IN THE BOTTLE!!!

IF YOU ARE NOT COMFORTABLE WITH DISASSEMBLING THE REGULATOR BRING THE REGULATOR TO A QUALIFIED AIR SMITH!

OR CALL 1.877.NINJAUSA. • (1.877.646.5287)

1. All internal parts are accessed by unscrewing the Bonnet from the Gas Distribution Body, see page 5 for details



DO NOT APPLY HEAT! If the bonnet does not easily unscrew,

MAKE SURE THE SYSTEM IS COMPLETELY DEGASSED BY DEPRESSING THE PIN VALVE TO EXHAUST ANY TRAPPED GAS.

2. After separating the bonnet from the gas distribution body the coil spring, shims, SRT piston, and Output Pin Valve components can be removed. Helpful Hint: Do not use tools to remove the SRT piston as this may damage the piston. Firmly grip the end of the piston and wiggle the piston while pulling.
3. Clean the inside of the NINJA REGULATOR body and bonnet with a cotton swab.
4. To reassemble,lightly lubricate both SRT piston “O” rings using Ninja Lube.
5. Re-install the Output Pin Valve & Spring.
6. Carefully push the Piston Assembly into the piston bore in the bonnet. The Piston must be properly seated in the Bonnet before proceeding further. The Piston is properly seated when it cannot be pushed in any further.
7. Reinstall the coil spring and shims as described on page 5. Do not apply excessive torque when screwing the Bonnet and Gas Distribution together. Replace and securely tighten the (2) 10-32 bonnet retaining screws with the supplied 10-32” wrench.

PLAY SAFE HAVE FUN ALWAYS WEAR ASTM APPROVED EYEWEAR PROTECTION!

1. Tank O-Rings 015-9OU-RED

2. Bonnet: NINJA421B (brass)
NINJA421A (alum.)

3. Bonnet Screws*

4. Pin Valve Seat***

5. Pin Valve**

6. Pin Valve Spring**

7. Piston O-Ring*

8. SRT Piston*

9. Piston O-Ring*

10. Reg. Seat*

11. Thin Pressure
Adjustment Shims*

12. Thick Pressure
Adjustment Shims (red)*

13. Main Springs
NIJAMDW3537

14. Low Pressure
Burst Disk: 1800BDBLK

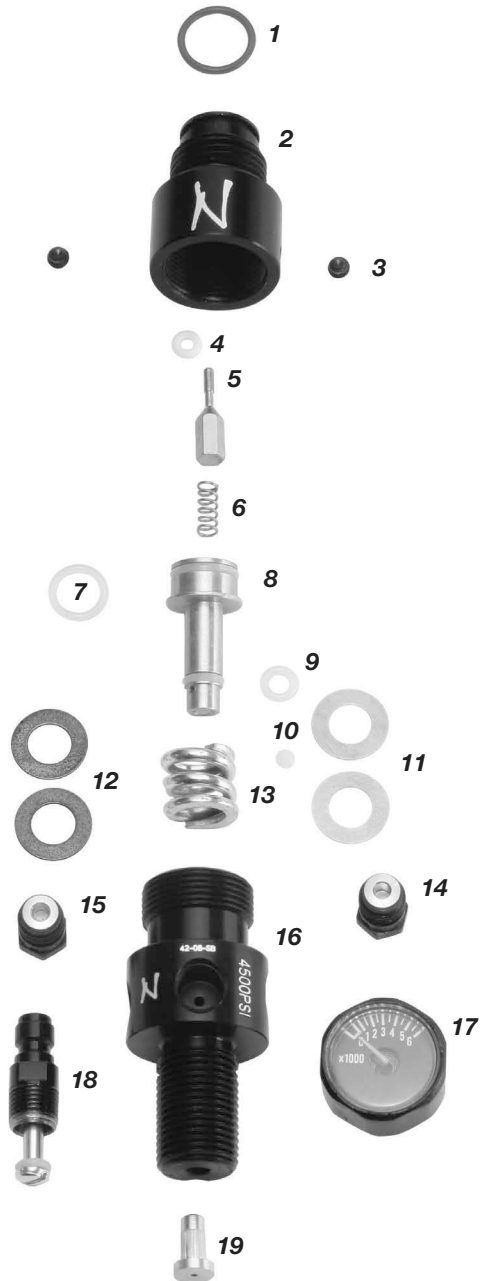
15. High Pressure Bottle
Burst Disk:
5000BDBLK
(for 3K systems)
7500BDBLK
(for 4.5K systems)

16. Gas Distribution Body:
FACTORY ONLY

17. Gauge NINJAGAUGE

18. Mini Fill Valve:
NINJAMFV

19. Restrictor:
FACTORY ONLY



* Included in rebuild kit; NINJARBK

** Included in pin valve kit; NINJAPVK

*** Included in both kits



Made in USA

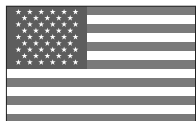
N

忍者

NinjaPaintball

Watch the video at: www.ninpaintball.com

1.877.NINJAUSA
(1.877.646.5287)



MADE IN USA

March 2010

www.ninpaintball.com

1.877.646.5287

Ninja Paintball